



Dimension Comparison Utility Guide

PV 600 SV 100

Copyright © 2022 OneStream Software LLC. All rights reserved.

Any warranty with respect to the software or its functionality will be expressly given in the Subscription License Agreement or Software License and Services Agreement between OneStream and the warrantee. This document does not itself constitute a representation or warranty with respect to the software or any related matter.

OneStream Software, OneStream, Extensible Dimensionality and the OneStream logo are trademarks of OneStream Software LLC in the United States and other countries. Microsoft, Microsoft Azure, Microsoft Office, Windows, Windows Server, Excel, .NET Framework, Internet Explorer, Internet Information Server, Windows Communication Foundation and SQL Server are registered trademarks or trademarks of Microsoft Corporation in the United States and/or other countries. DevExpress is a registered trademark of Developer Express, Inc. Cisco is a registered trademark of Cisco Systems, Inc. Intel is a trademark of Intel Corporation. AMD64 is a trademark of Advanced Micro Devices, Inc. Other names may be trademarks of their respective owners.

Table of Contents

- Dimension Comparison Utility Overview 1
- Dimension Comparison Utility Setup 2
 - Download Dimension Comparison Package 2
 - Run the Setup Package 2
 - Using the Dimension Comparison Utility 4
- Color Coded Hierarchy Differences 5
- Member Differences 7
- Help and Miscellaneous Information 8
 - Display Settings 8
 - MarketPlace Solution Modification Considerations 8

Dimension Comparison Utility Overview

The Dimension Comparison Utility Solution compares two OneStream Dimension extracts and determines the differences between the two files. Each selected Dimension displays its Members in a tree format and highlights any property differences.

Dimension Comparison Utility Setup

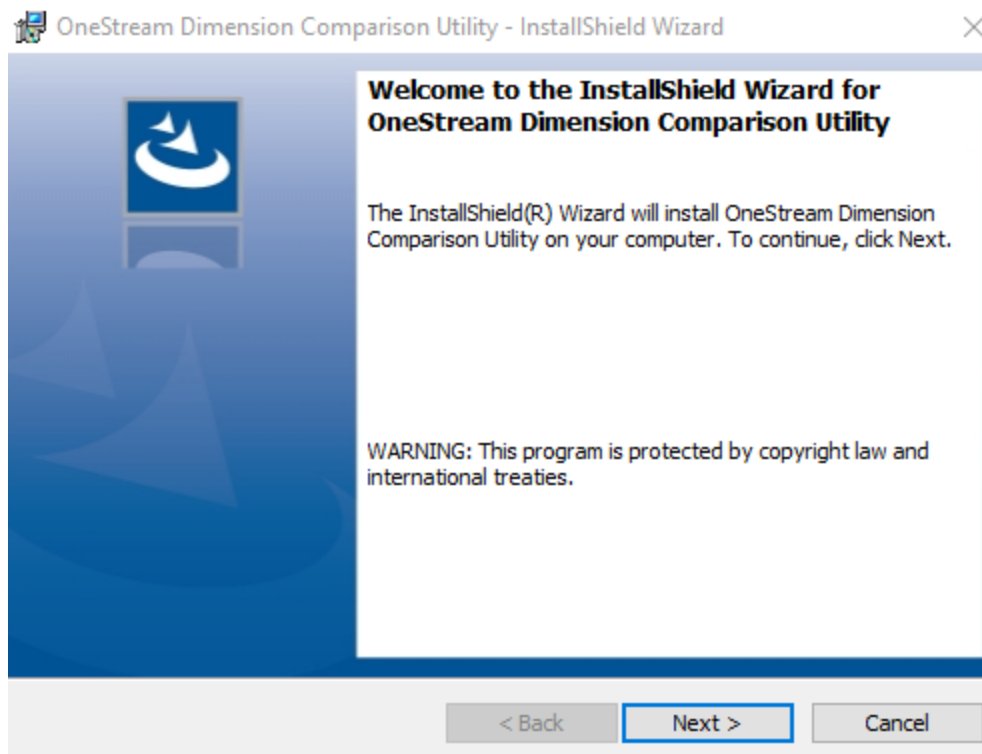
The Dimension Comparison Utility setup is broken into two main steps.

Download Dimension Comparison Package

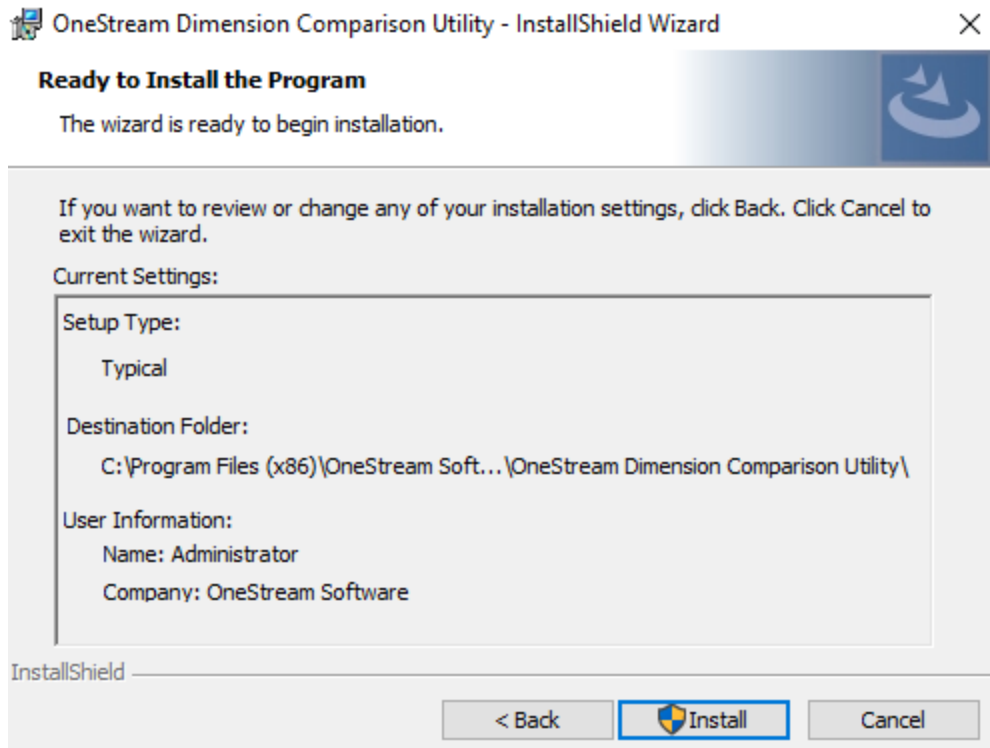
The Dimension Comparison package is a zip file containing a Setup.exe file. It is located in the OneStream MarketPlace. The Dimension Comparison Utility is an installed .exe and does not contain any OneStream Dashboards.

Run the Setup Package

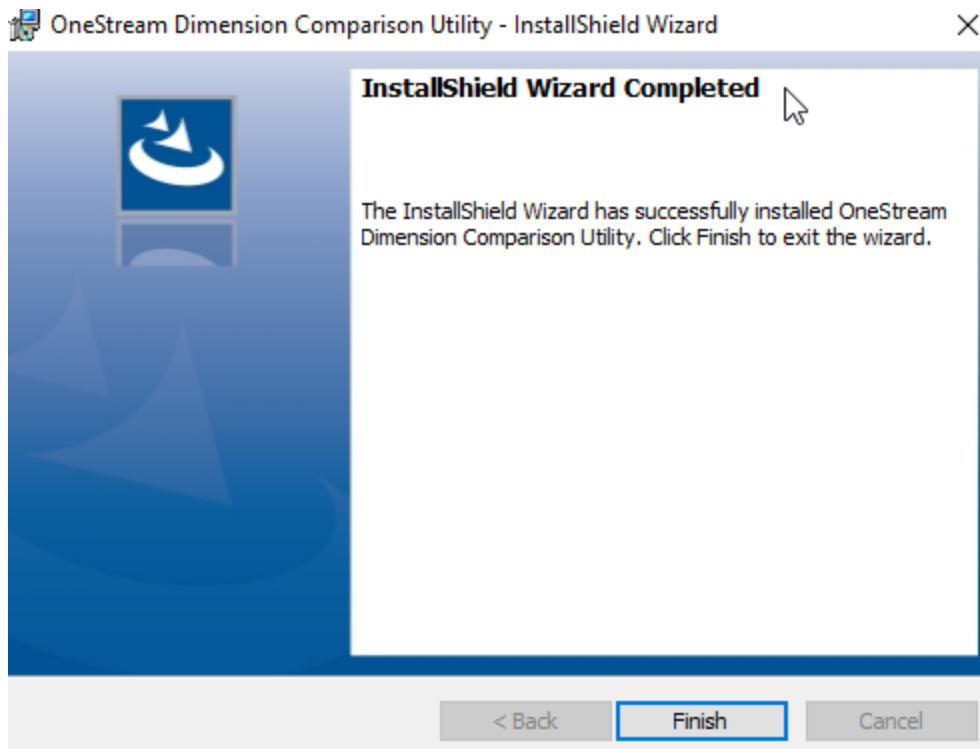
To install the Dimension Comparison Utility, unzip the Setup file and run the .exe.



Dimension Comparison Utility Setup



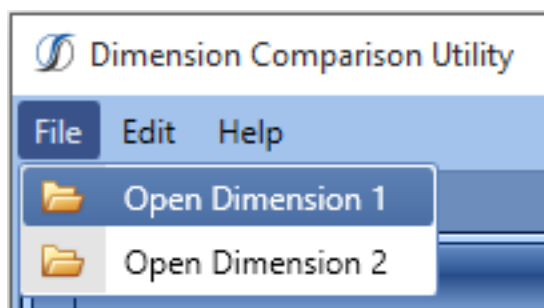
Dimension Comparison Utility Setup



Using the Dimension Comparison Utility

The startup screen displays when you start the Dimension Comparison Utility.

Select two valid OneStream Dimension XML extracts to compare from the File menu.



Once the two files have been selected, the comparison automatically begins.

Color Coded Hierarchy Differences

The top section of the grid displays the Dimension Tree. Each row in the tree represents a Dimension Member and is highlighted in a color defined below:

White

No change in the Member and all of its descendants.

Light Yellow

At least one non-immediate descendant has been changed.

Orange

The Member's properties or at least one immediate child has been changed.

Red

The Member has been removed.

Green

The Member has been added.

The screenshot shows a window titled "Dimension 1" containing a grid with two columns: "Item Name" and "Description". The grid displays a hierarchy of items, with rows highlighted in different colors to indicate changes. The hierarchy is as follows:

- Dimension
 - Members
 - Ann Arbor Store (Orange)
 - Cash Flow (White)
 - DCU Member (White) - Description: Testing DCU
 - Detroit Store (White)
 - Livonia Store (Red)
 - Petty Cash (White)
 - Orphans (White)
 - Hierarchy (Light Yellow)
 - DCU Member (White) - Description: Testing DCU
 - Cash Flow (White)
 - Petty Cash (Orange)
 - Livonia Store (Red)
 - Detroit Store (White)
 - Ann Arbor Store (Orange)

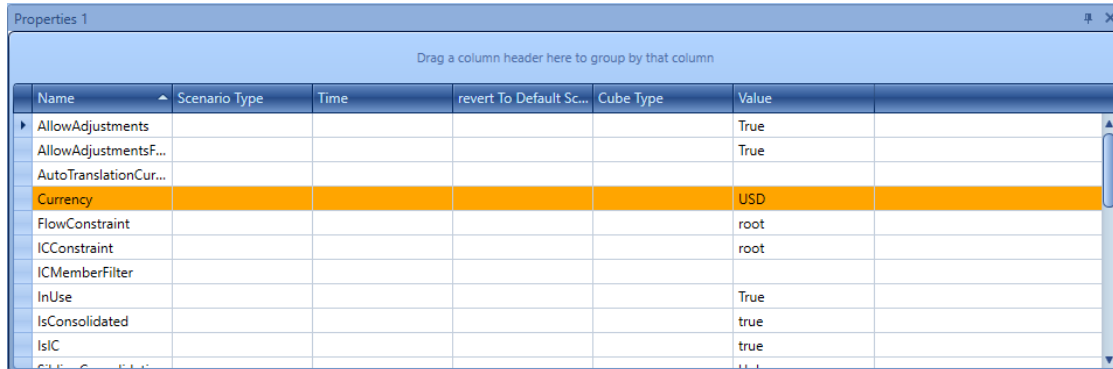
Color Coded Hierarchy Differences

Dimension 2

Item Name	Description
Dimension	
Members	
Ann Arbor Store	
Cash Flow	
DCU Member	Testing DCU
Detroit Store	
Detroit West	
Petty Cash	
Orphans	
Hierarchy	
DCU Member	Testing DCU
Cash Flow	
Petty Cash	
Detroit Store	
Ann Arbor Store	
Detroit West	

Member Differences

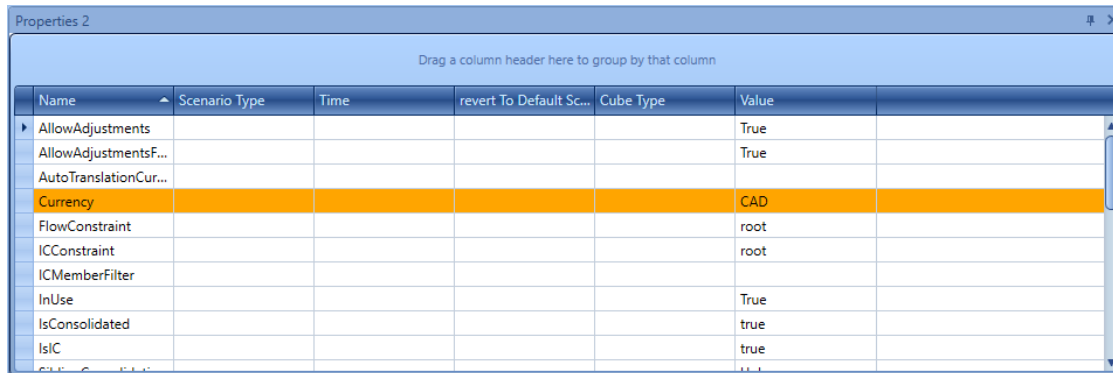
The bottom section of the grid displays the Member settings. All Member properties highlighted in orange have different settings.



Properties 1

Drag a column header here to group by that column

Name	Scenario Type	Time	revert To Default Sc...	Cube Type	Value
AllowAdjustments					True
AllowAdjustmentsF...					True
AutoTranslationCur...					
Currency					USD
FlowConstraint					root
ICConstraint					root
ICMemberFilter					
InUse					True
IsConsolidated					true
IsIC					true

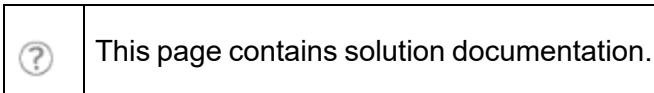


Properties 2

Drag a column header here to group by that column

Name	Scenario Type	Time	revert To Default Sc...	Cube Type	Value
AllowAdjustments					True
AllowAdjustmentsF...					True
AutoTranslationCur...					
Currency					CAD
FlowConstraint					root
ICConstraint					root
ICMemberFilter					
InUse					True
IsConsolidated					true
IsIC					true

Help and Miscellaneous Information



Display Settings

OneStream and MarketPlace solutions frequently require the display of multiple data elements for proper data entry and analysis. Therefore, the recommended screen resolution is a minimum of 1920 x 1080 for optimal rendering of forms and reports.

Additionally, OneStream recommends that you adjust the Windows System Display text setting to 100% and do not apply any Custom Scaling options.

MarketPlace Solution Modification Considerations

A few cautions and considerations regarding modification of MarketPlace solutions:

- Major changes to business rules or custom tables within a MarketPlace solution will not be supported through normal channels as the resulting solution is significantly different from the core solution.
- If changes are made to any dashboard object or business rule, consider renaming it or copying it to a new object first. This is important because if there is an upgrade to the MarketPlace solution in the future and the customer applies the upgrade, this will overlay and wipe out the changes. This also applies when updating any of the standard reports and dashboards.

- If modifications are made to a MarketPlace solution, upgrading to later versions will be more complex depending on the degree of customization. Simple changes such as changing a logo or colors on a dashboard do not impact upgrades significantly. Making changes to the custom database tables and business rules, which should be avoided, will make an upgrade even more complicated.